

Comparison of western redcedar and yellow-cedar growth under different silvicultural systems

W.J. Beese¹, J.S. Sandford², C.N. Filipescu³

¹Vancouver Island University

²J.S. Sandford and Associates

³Canadian Wood Fibre Centre, NRCan

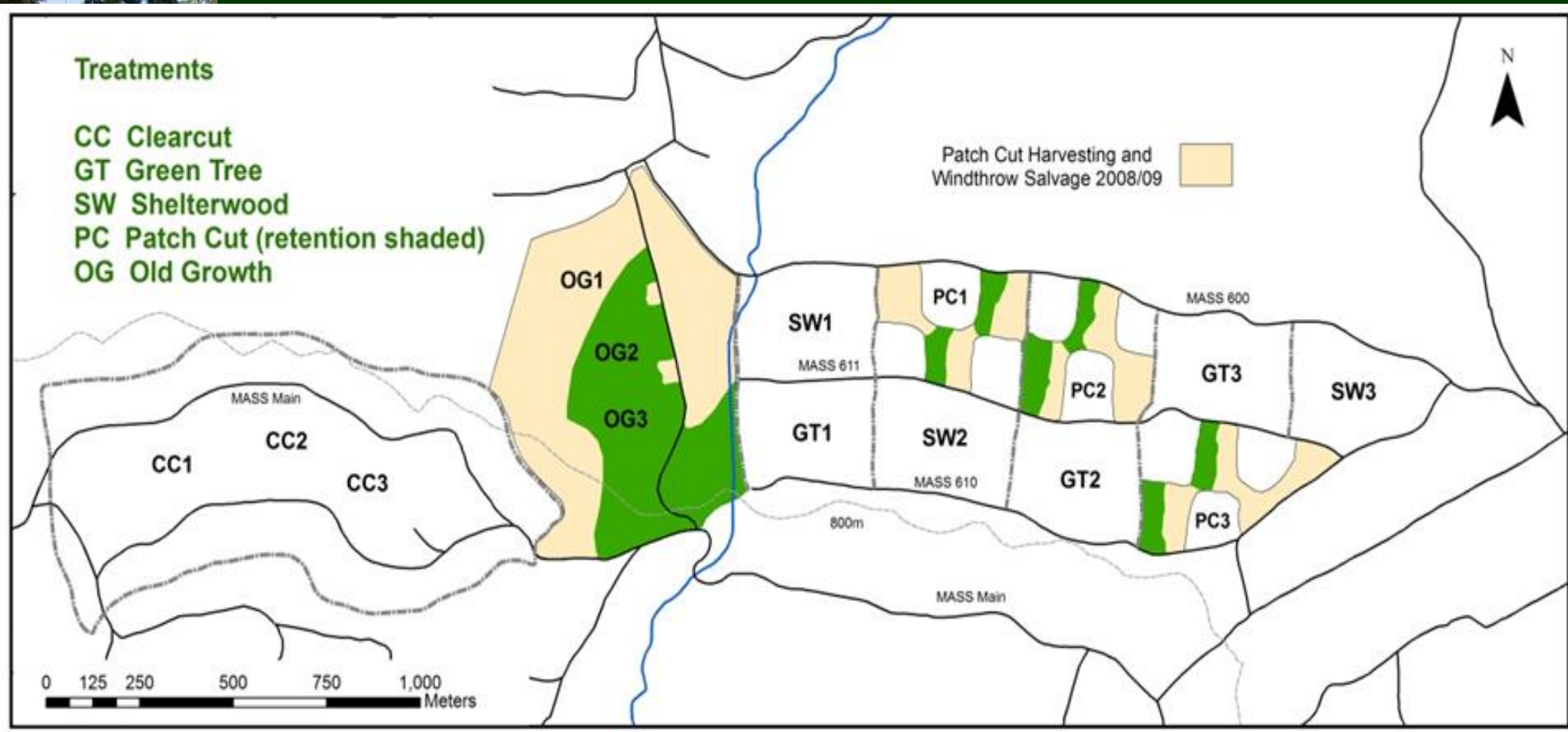


Montane CWHmm2 variant



Vancouver Island

MASS Study Area



MASS Treatments



Clearcut - 69 ha



Patch Cuts 1.5 to 2 ha



GT Retention - 25 sph



Shelterwood – 25% b.a.

2003

Year 10

MASS Treatments



Clearcut - 69 ha



Patch Cuts 1.5 to 2 ha



GT Retention - 25 sph

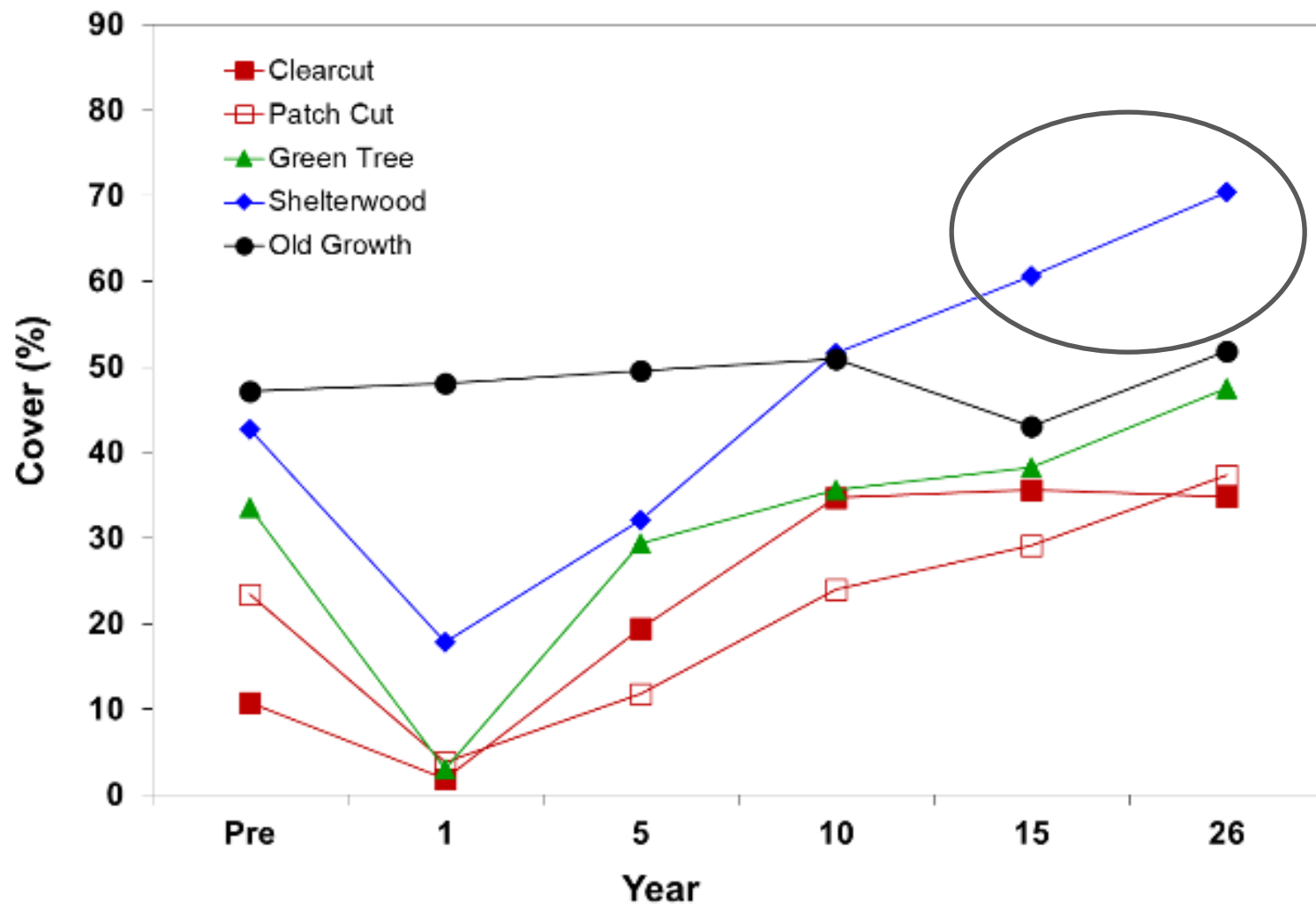


Shelterwood – 25% b.a.

2021

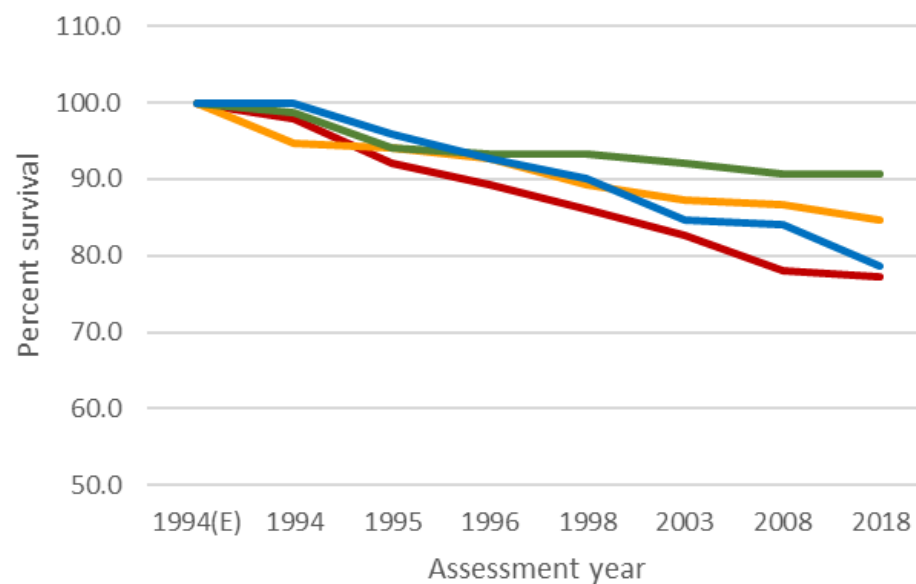
Year 28

Shrub cover

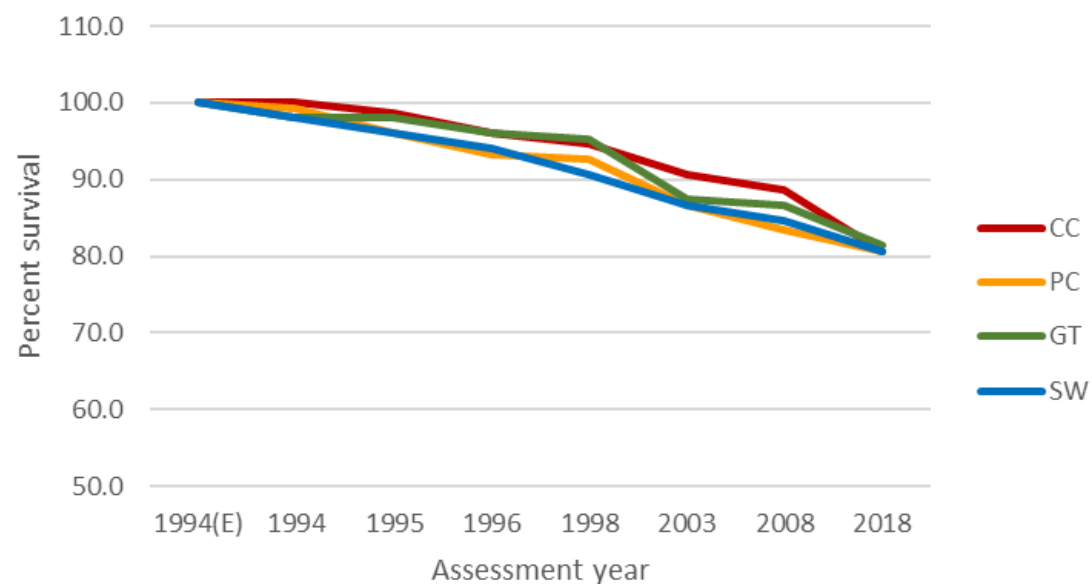


Survival

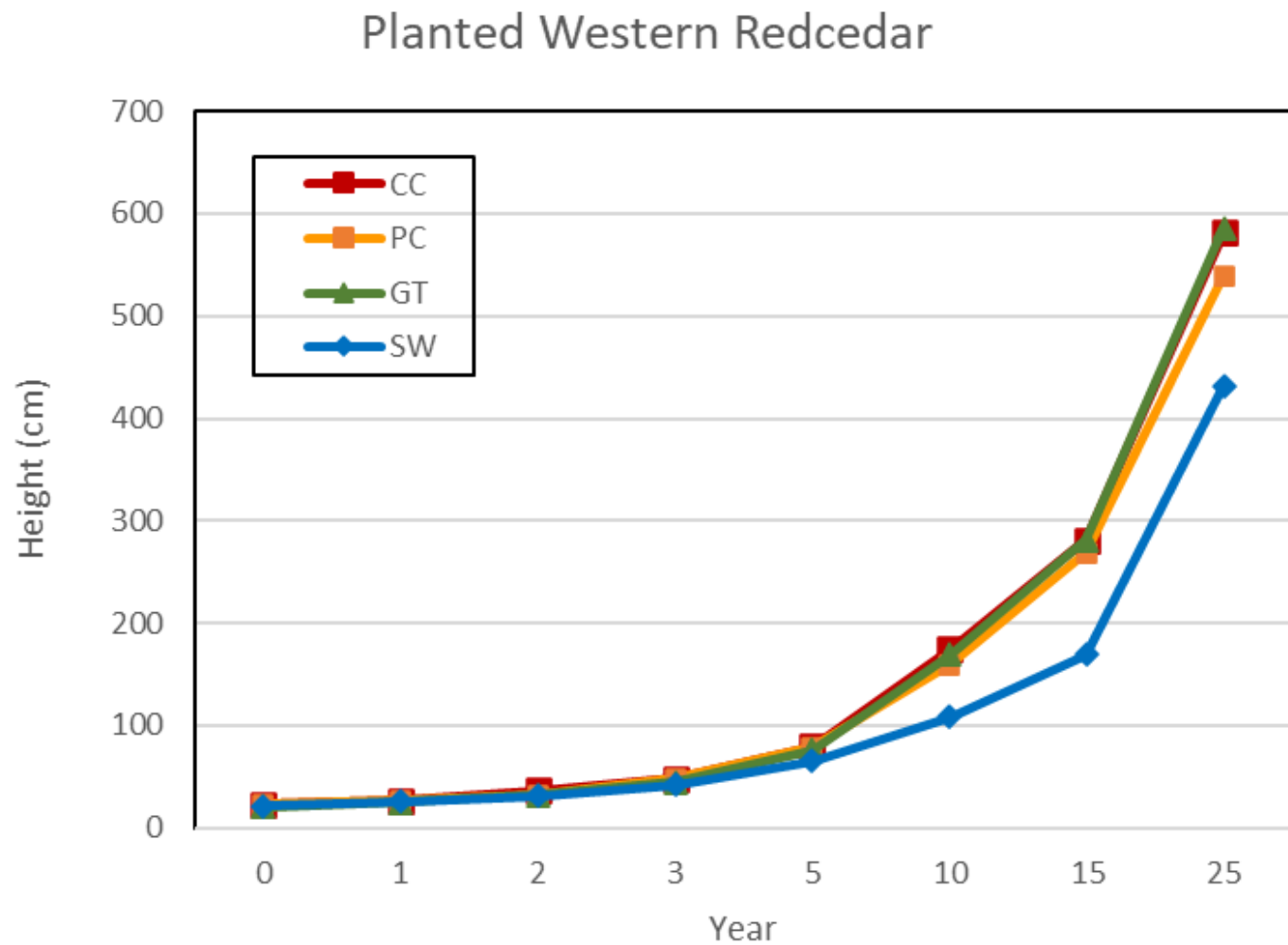
Western redcedar



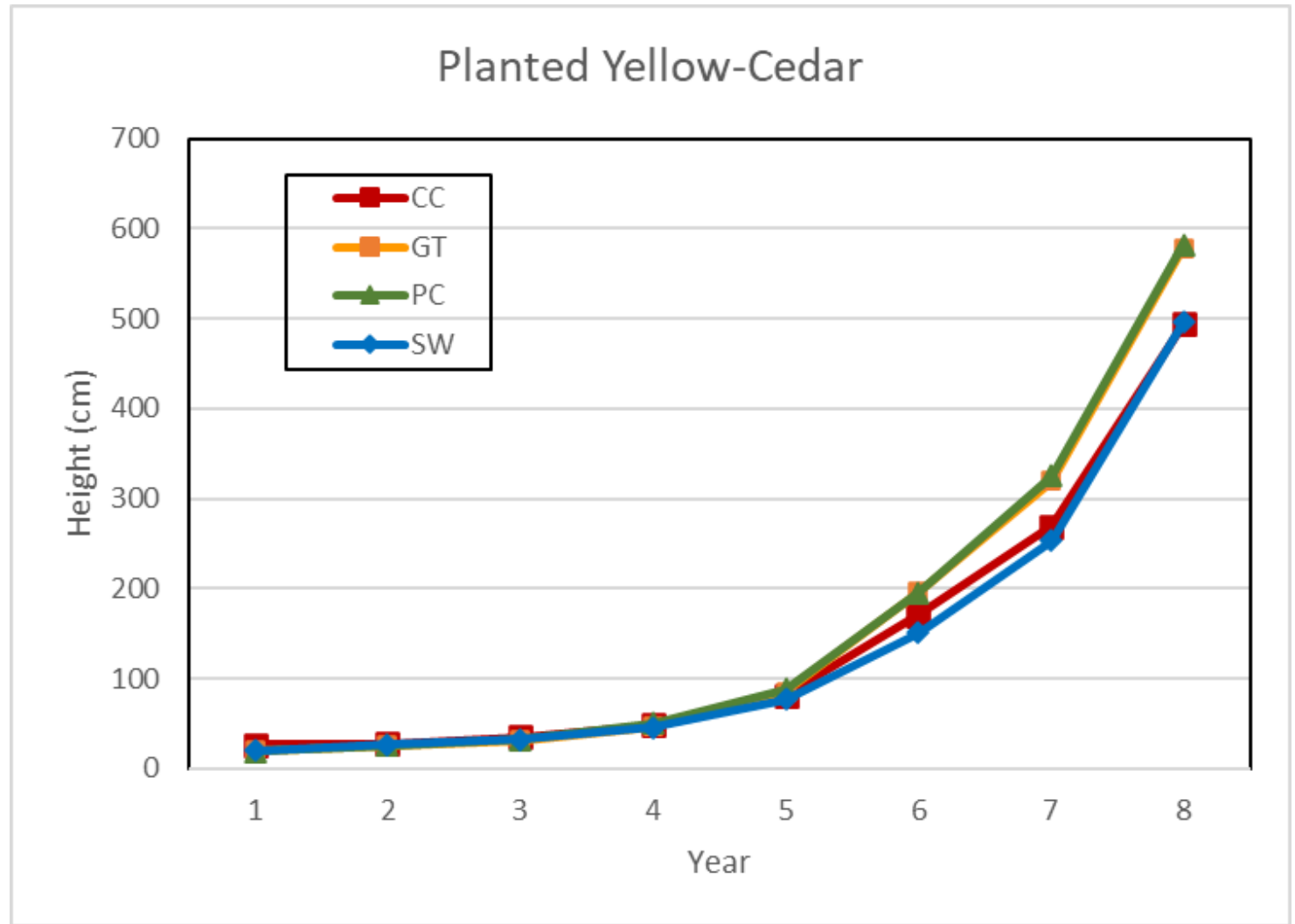
Yellow-cedar



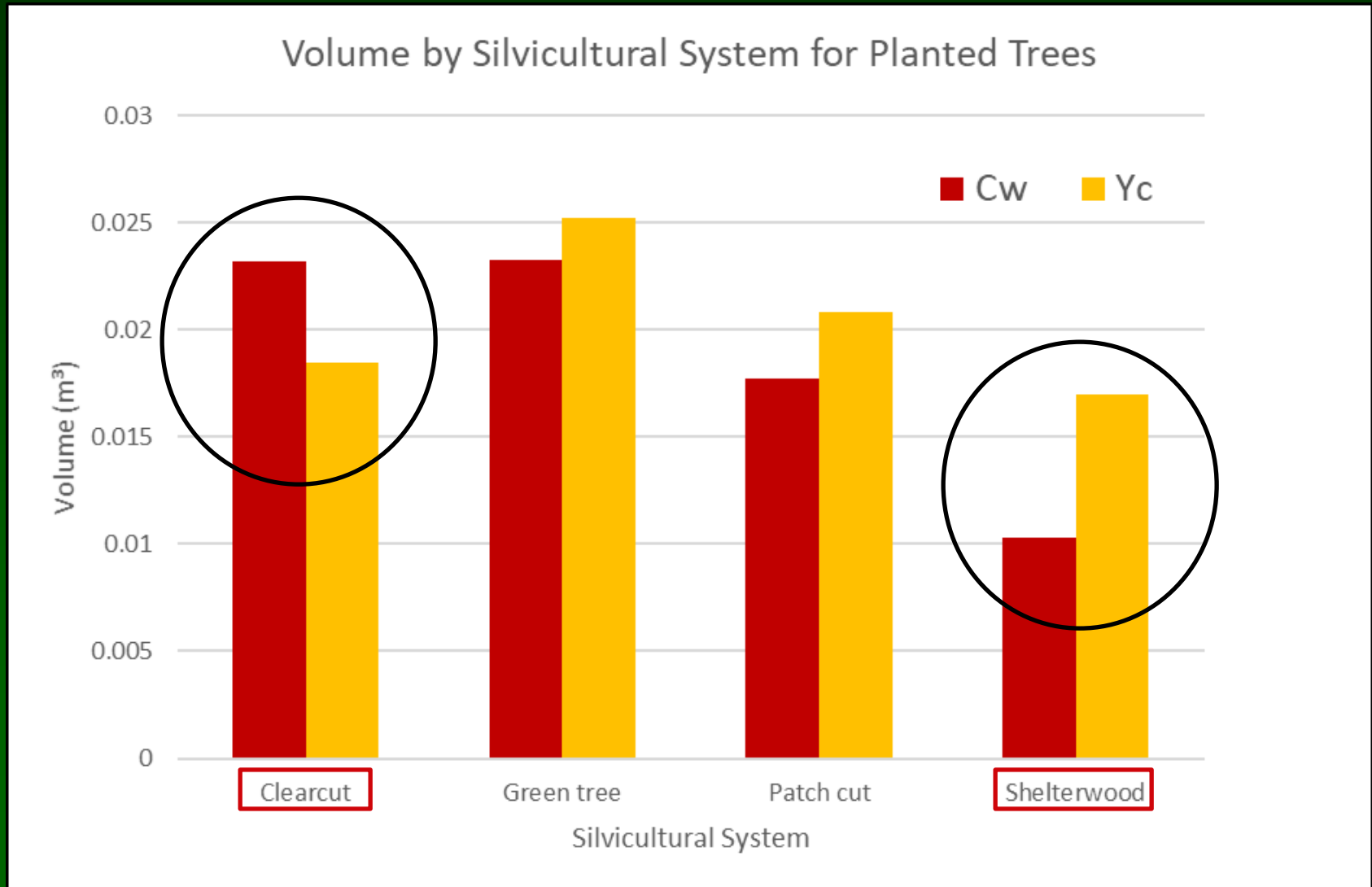
Cw Height



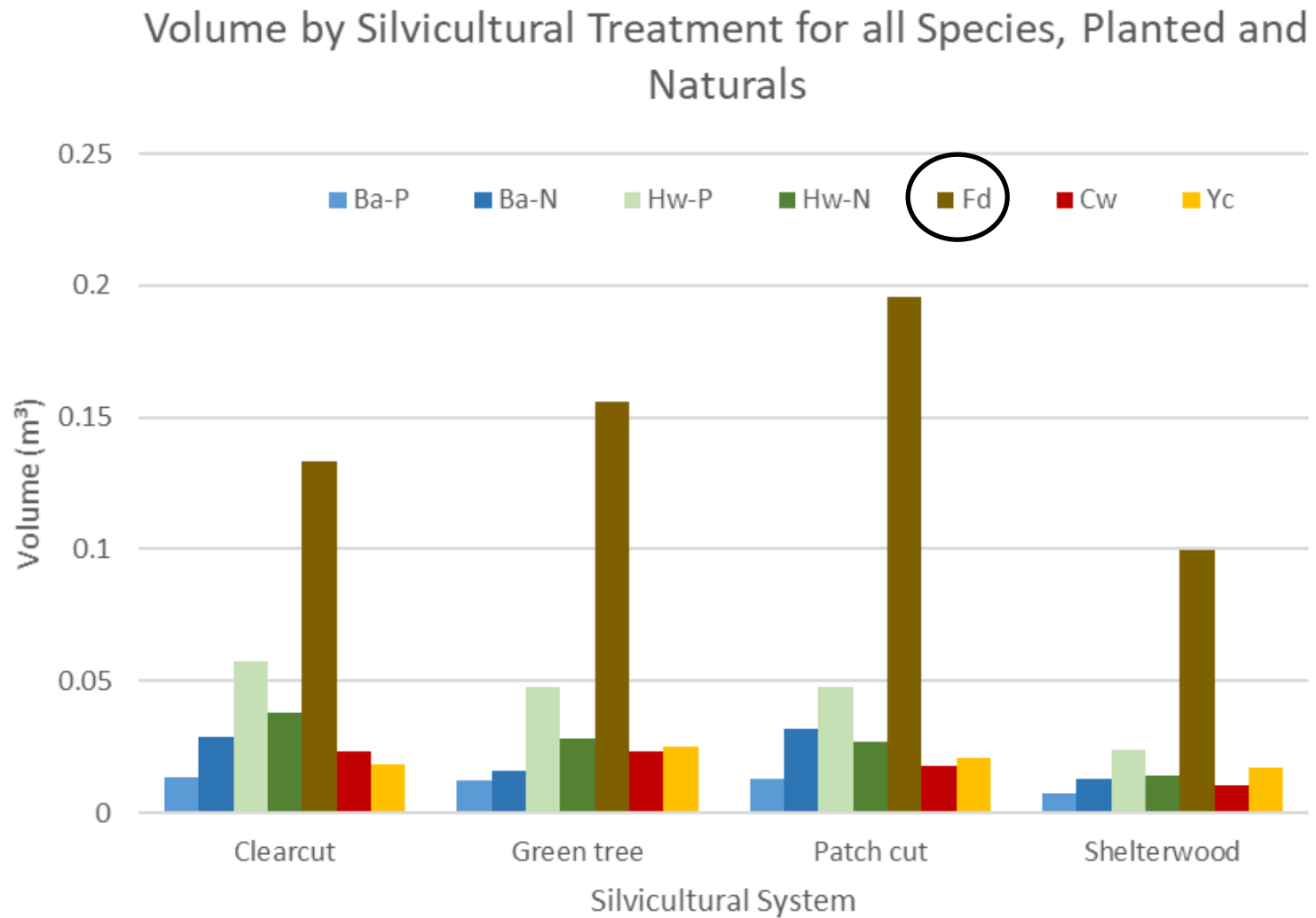
Yc Height



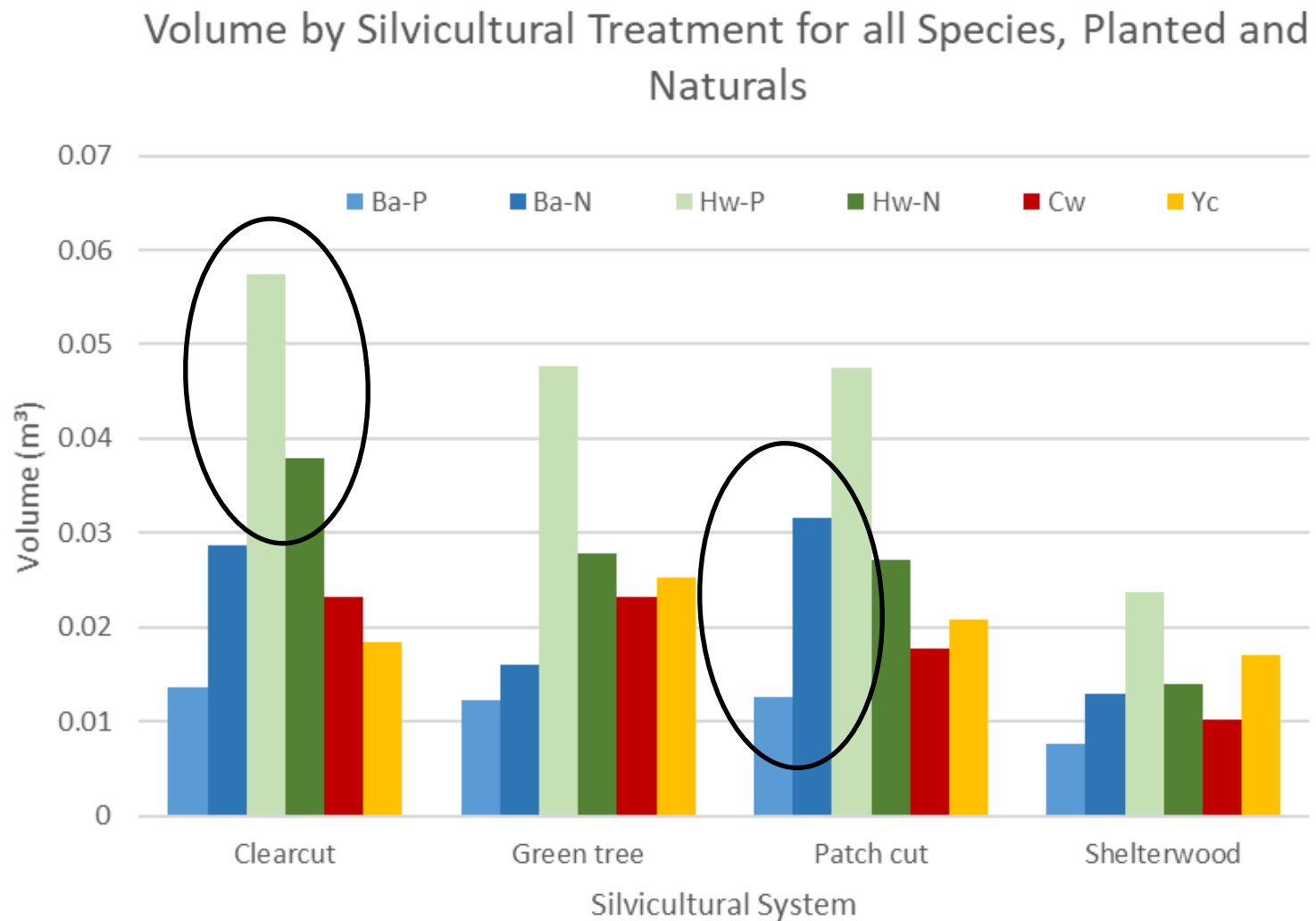
Volume @ 25 years



Volume @ 25 years



Volume @ 25 years





Conclusions

- **SURVIVAL (25-yr):**
 - Yc consistent (80%), no SS effect
 - Cw variable (78 – 90%), SS random
- **GROWTH (25 yr height & volume)**
 - $Cw > Yc$ in Clearcut
 - $Yc > Cw$ in Shelterwood
 - SS had more effect on Cw ($CC > SW$)



Questions?

